

**RATES AND RULES GOVERNING LOCAL EXCHANGE SERVICE**



**MONTHLY RATES FOR LOCAL EXCHANGE SERVICE**

Monthly rates for local service beyond the base rate area as shown on Map, Section 2, Sheet 2.

**ONE-PARTY ACCESS LINE**

	<b><u>Business</u></b>	<b><u>Residence</u></b>
Zone 4 .....	\$17.85	\$13.85
Zone 5 .....	\$19.85	\$15.85
Zone 6 .....	\$21.85	\$17.85
Zone 7 .....	\$23.85	\$19.85

\* \* \* (C)

\* \* \* (C)

**ALL GRADES OF SERVICE**  
(Base rate & Zone Rate areas)

Standard Telephone set, each	\$1.00	\$1.00
Wire outlet, each.....	\$1.80	\$ .90

\* \* \* (C)

**TERMINATING EQUIPMENT**

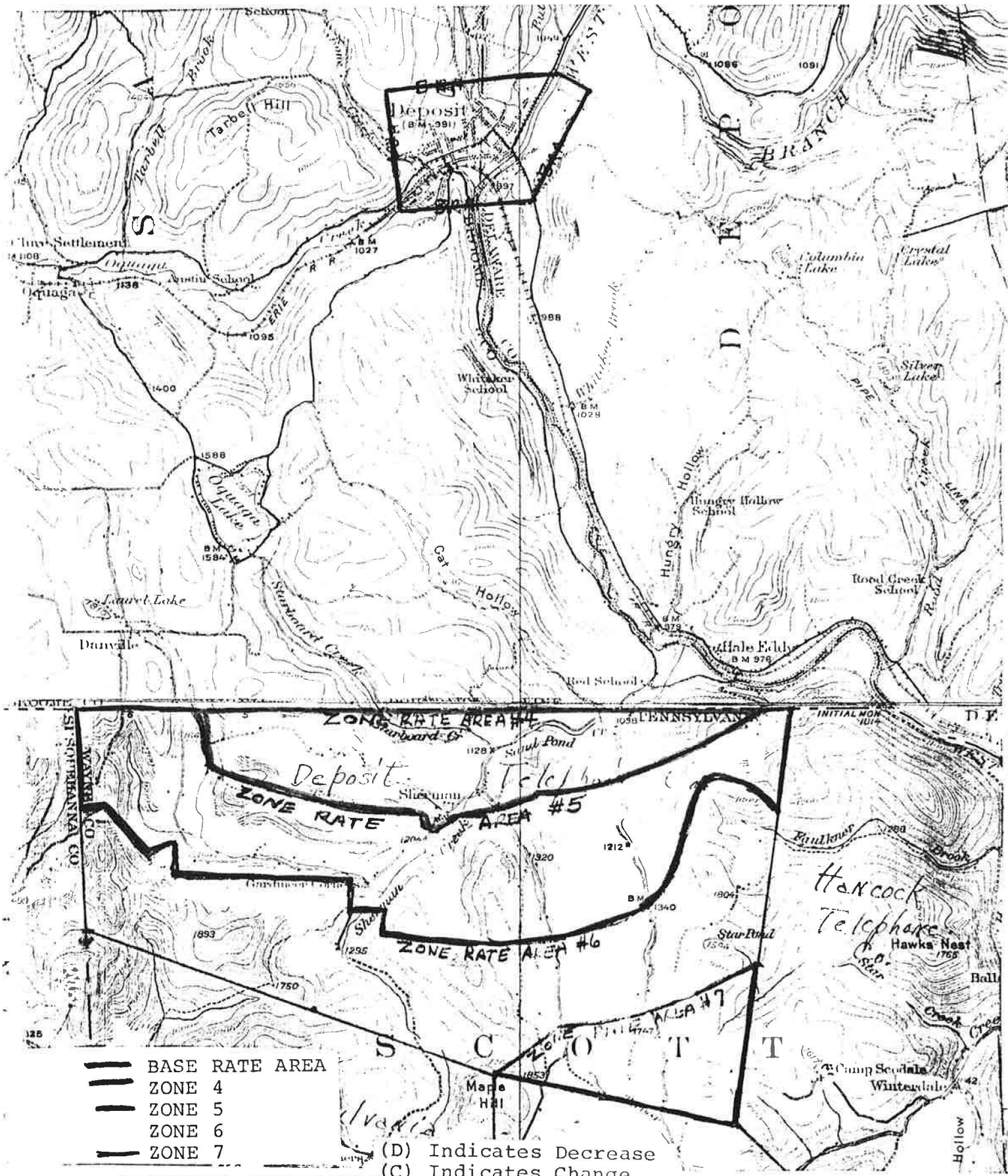
The rates for terminating equipment are applicable only to customers with services at December 31, 1982 or to customers taking service after that date utilizing embedded equipment.






**LOCAL SERVICE AREA**

The local service area embraces stations bearing the designation of Sherman, Pennsylvania and Deposit, New York.

(C) Indicates Change

TERRITORIAL BOUNDARY OF  
DEPOSIT TELEPHONE COMPANY, INC. in PENNSYLVANIA



-  BASE RATE AREA
-  ZONE 4
-  ZONE 5
-  ZONE 6
-  ZONE 7

(D) Indicates Decrease  
(C) Indicates Change

TDS Telecom/Deposit  
Telephone Company, Inc.

SECTION 2  
4<sup>th</sup> Revised Sheet 3  
Cancels 3<sup>rd</sup> Revised Sheet 3

**RESERVED FOR FUTURE USE**

**APPROVED**

(C)

(C) Indicates Change

TDS Telecom/Deposit  
Telephone Company, Inc.

SECTION 2  
5<sup>th</sup> Revised Sheet 4  
Cancels 4<sup>th</sup> Revised Sheet 4

**RESERVED FOR FUTURE USE**

**APPROVED**

(C)

(C) Indicates Change

**RATES AND RULES GOVERNING LOCAL EXCHANGE SERVICE**

**VACATION SERVICE**

**APPROVED**

A. General

Vacation Service allows local exchange service to be temporarily interrupted by request of the customer. This service is provided to customers whose requirements for telephone service is less than the normal 12-month period within a year.

B. Conditions

1. Service can be temporarily interrupted for a minimum of one (1) month. (C)
2. Vacation of Service is available on all one-party residence lines and up to three one-party business lines subject to the availability of facilities.
3. The customer must have at least one month of regular telephone service paid prior to the establishment of Vacation Service.
4. The Company reserves the right to bill charges for the total number of suspended months requested prior to establishment of Vacation Service if the customer will not be at a consistent billing address during the vacation period.
5. Vacation Service may begin and terminate on any day of the month, provided notice is given sufficiently in advance for arrangements to be made.
6. The Company will not provide installations, moves, changes, or maintenance during the period when the customer is billed at the reduced rate.

\* \* \*

(C)

(C) Indicates Change

---

**Issued:** January 18, 2024

**Effective:** February 19, 2024

**RATES AND RULES GOVERNING LOCAL EXCHANGE SERVICE**

**VACATION SERVICE** (Continued)

**APPROVED**

B. Conditions (Continued)

8. Bills are rendered at the reduced rate at regular billing dates during the period of interruption.
9. The customer's listing will be retained in the directory.
10. The Company assumes no liability for failure of a calling party to reach the customer during the period of interruption.
11. The Company reserves the right to refuse vacation service in the case of a customer whose account is delinquent.
12. Dial tone access will be limited to 911/E911 and the Company's Business Office.
13. Unless specifically exempted, Vacation Service shall be subject to all general regulations applicable to the provision of service by the telephone company as stated in the general tariff.

\* \* \*

(C)

C. Rates and Charges

1. The monthly rate for local service will be discounted by 100% while on Vacation Service.
2. An \$11.95 non-recurring charge will apply for reconnection to regular full service.
3. Personal Greeting Service

This optional service is available for customers who prefer to leave a personalized greeting for incoming calls while they are on Vacation Service.

Monthly Rate: \$3.50

(C) Indicates Change

**RATES AND RULES GOVERNING LOCAL EXCHANGE SERVICE**

**APPROVED**

**STAR PACKAGES<sup>(4)</sup>**

A. General

1. The STAR Packages are optional service bundles. Each package permits a customer to receive services and features for a flat monthly rate, for each STAR Package subscriber line provided. The STAR Package options include the following services:

	<u>Rate Per Month</u>	
a) <u>3 STAR Standard Package</u>	\$30.49 <sup>(5)</sup>	(I)
Residential One-Party Line <sup>(1)</sup>		
Caller ID Deluxe <sup>(1)</sup>		
Call Waiting/Cancel Call Waiting <sup>(1)</sup>		
Call Forwarding <sup>(1)</sup>		
Preferred Call Forwarding <sup>(1)</sup>		
30 Minutes of Long Distance Calling <sup>(2)</sup>		

The 3 STAR Package can be upgraded for \$5.00 per month to include:

- Anonymous Call Rejection <sup>(1)</sup>
- Three-Way Calling <sup>(1)</sup>
- Priority Ringing <sup>(1)</sup>
- Special Call Acceptance <sup>(1)</sup>
- Personal Voicemail <sup>(3)</sup>

<sup>(1)</sup> The regulated portions of this package can be found in Sections 2 and 6 of this Tariff.

<sup>(2)</sup> Provided for informational purposes only (non-jurisdictional in this tariff); Customers who also subscribe to the corresponding TDS Long Distance STAR Plan will benefit from the long distance minutes of use component. Restrictions on use of unlimited long distance service are shown in 2.e Regulations.

<sup>(3)</sup> Provided for informational purposes only (this is a deregulated service).

<sup>(4)</sup> This service is grandfathered to existing customers, effective March 1, 2023. The service will not be available to new customers after this date.

<sup>(5)</sup> These increases are effective on the Company's May bill cycle date. (C)

(I) Indicates Increase (C) Indicates Change

TDS Telecom/Deposit  
Telephone Company, Inc.

SECTION 2  
Third Revised Sheet 8  
Cancels Second Revised Sheet 8

**RATES AND RULES GOVERNING LOCAL EXCHANGE SERVICE**

**APPROVED**

**STAR PACKAGES \*\*\*\*\*(cont'd)**

A. General (cont'd)

	<u>Rate Per Month</u>	
b) <u>4 STAR Standard Package</u>	\$40.49*****	(I)
Residential One-Party Line*		
Caller ID Deluxe*		
Call Waiting/Cancel Call Waiting*		
Call Forwarding*		
Preferred Call Forwarding*		
Anonymous Call Rejection*		
300 Minutes of Long Distance calling**		

The 4 STAR Package can be upgraded for \$5.00 per month to include:

- Three-Way Calling\*
- Priority Ringing\*
- Special Call Acceptance\*
- Personal Voicemail\*\*\*

\* The regulated portions of this package can be found in Sections 2 and 6 of this Tariff.

\*\* Provided for informational purposes only (non-jurisdictional in this tariff); must also subscribe to the corresponding TDS Long Distance STAR Plan to benefit from the long distance minutes of use component. Restrictions on use of unlimited long distance service are shown in 2.e Regulations.

\*\*\* Provided for informational purposes only (this is a deregulated service).

\*\*\*\* This service is grandfathered to existing customers, effective March 1, 2023. The service will not be available to new customers after this date.

\*\*\*\*\* These increases are effective on the Company's May bill cycle date. (C)

(I) Indicates Increase      (C) Indicates Change

**Issued:** April 1, 2024

**Effective:** May 1, 2024



**RATES AND RULES GOVERNING LOCAL EXCHANGE SERVICE**

**APPROVED**

**STAR PACKAGES\*\*\*\* (cont'd)**

A. General (cont'd)

	<u>Rate Per Month</u>	
c) <u>5 STAR Standard Package</u>	\$50.49*****	(I)
Residential One-Party Line*		
Caller ID Deluxe*		
Call Waiting/Cancel Call Waiting*		
Call Forwarding*		
3-Way Calling*		
Anonymous Call Rejection*		
Priority Ringing*		
Special Call Acceptance*		
Preferred Call Forwarding*		
Personal Voice Mail***		
Unlimited Long Distance calling **		

\* The regulated portions of this package can be found in Sections 2 and 6 of this Tariff.

\*\* Provided for informational purposes only (non-jurisdictional in this tariff); Customers must also subscribe to the corresponding TDS Long Distance STAR Plan to benefit from the long distance minutes of use component. Restrictions on use of unlimited long distance service are shown in 2.e Regulations.

\*\*\* Provided for informational purposes only (this is a deregulated service).

\*\*\*\* This service is grandfathered to existing customers, effective March 1, 2023. The service will not be available to new customers after this date.

\*\*\*\*\* These increases are effective on the Company's May bill cycle date. (C)

(I) Indicates Increase      (C) Indicates Change

**Issued:** April 1, 2024

**Effective:** May 1, 2024

**RATES AND RULES GOVERNING LOCAL EXCHANGE SERVICE**

**APPROVED**

**STAR PACKAGES**\* (Continued)

(C)

**B. Conditions and Limitations**

1. Rules, regulations, and limitations as specified elsewhere in the Company's tariffs for each individual service will apply as part of this Package.
2. STAR Package customers may terminate their Package at any time upon notice to the company.
3. Unless terminated by the STAR Package customer or the Company, a customer will remain enrolled in the Package, as amended from time-to-time, with any applicable changes in rate, for as long as the Plan continues to be offered by the Company.
4. Service Charges, as described in Section 3 of this tariff, apply to requests for new and additional STAR Package lines, and moves of existing lines. Service Charges will not apply when the STAR Package replaces existing Local Exchange Service or if the customer requests a change from the STAR Package back to Local Exchange Service.
5. STAR Package customers are not eligible for discounts or promotional offerings outside of this Package, unless specifically provided for in a promotional offering.
6. The Package may not be combined with any other optional toll calling plan service, except for those specified in this offering.
7. Customers may upgrade their Voice Mail Service package for an additional fee.
8. Customers who fail to pay the entire Package rate per month will have all STAR Package optional features removed. The customer will then be converted to the tariffed Basic Local service rate. Service Charges will not apply for converting services back to tariff rates. Such customers will not be permitted to re-enroll in this any of the Packages until such time as all associated unpaid balances are satisfactorily paid in full.

\* This service is grandfathered to existing customers, effective March 1, 2023. The service will not be available to new customers after this date.

(C)

(C)

(C) Indicates Change

**RATES AND RULES GOVERNING LOCAL EXCHANGE SERVICE**

**APPROVED**

**STAR BUSINESS BUNDLES**<sup>(5)</sup>

(C)

A. General

1. The STAR Business Bundles are optional offerings that package services and features together for a flat monthly rate that is applicable to each STAR Business Bundle subscriber line provided.  
There are 2 STAR Business Bundle options.
  - a) STAR Business Bundle – Standard<sup>1</sup>  
Includes: Business One-Party Line<sup>4</sup>, 200 Minutes of TDS Long Distance<sup>2</sup> Calling and the following features:  
Caller ID Deluxe<sup>4</sup>  
Call Forwarding<sup>4</sup>  
Call Forward Remote Access<sup>4</sup>  
Call Waiting/Cancel Call Waiting<sup>4</sup>  
3-Way Calling<sup>4</sup>  
Voice Mail<sup>3</sup>
  - b) STAR Business Bundle Unlimited – Standard<sup>1</sup>  
Includes: Business One-Party Line<sup>4</sup>, Unlimited TDS Long Distance<sup>2</sup> calling and the following features:  
Caller ID Deluxe<sup>4</sup>  
Call Forwarding<sup>4</sup>  
Call Forward Remote Access<sup>4</sup>  
Call Waiting/Cancel Call Waiting<sup>4</sup>  
3-Way Calling<sup>4</sup>  
Voice Mail<sup>3</sup>

<sup>1</sup> Customers must also subscribe to TDS Telecom’s high speed data. This information is provided for informational purposes only (non jurisdictional in this tariff); high speed data is provided by TDS Telecom and internet speeds are not guaranteed.

<sup>2</sup> Provided for informational purposes only (non jurisdictional in this tariff). Customers who also subscribe to the corresponding TDS Long Distance STAR Plan will benefit from the long distance minutes of use component. Restrictions on use of unlimited long distance service are shown in 2.e. Regulations.

<sup>3</sup> Provided for informational purposes only (this is a deregulated service)

<sup>4</sup> The regulated portions of this package can be found in Section 2 and 6 of this Tariff.

<sup>5</sup> This service is grandfathered to existing customers effective May 1, 2023. The service will not be available to new customers after this date.

(C)  
(C)

(C) Indicates Change

TDS Telecom/Deposit  
Telephone Company, Inc.

SECTION 2  
Second Revised Sheet 10.2  
Cancels First Revised Sheet 10.2

**RATES AND RULES GOVERNING LOCAL EXCHANGE SERVICE**

**APPROVED**

**STAR BUSINESS BUNDLES**<sup>(2)</sup> (Continued)

**B. Conditions and Limitations**

1. Rules, regulations, and limitations as specified elsewhere in the Company’s tariffs for each individual service will apply.
2. The Bundle may not be combined with any other optional toll calling plan service, except for those specified in this offering.
3. Discounts or promotions outside of this Bundle are not available, unless specifically provided for in the discount or promotional offering.
4. Service Connection Charges, as described in Section 3 of this tariff, apply to requests for new and additional STAR Business Bundle lines, and moves of existing lines.
5. The Service Order Charge listed under the “Rates” section below will apply if the customer requests a change to their STAR Business Bundle offering (i.e. a request to change features or downgrade) or requests to change from the STAR Business Bundle back to Local Exchange Service. The charge will not apply when the STAR Business Bundle replaces existing Local Exchange Service or the customer would like to upgrade their STAR Business Bundle.
6. STAR Business Bundle customers may terminate their package at any time upon notice to the company.
7. Customers who fail to pay the entire package rate per month will have all STAR Business Bundle optional features removed. The customer will then be converted to the tariffed Basic Local service rate. Service Charges will not apply for converting services back to a la carte tariff rates. Such customers will not be permitted to re-enroll in any of the packages until such time as all associated unpaid balances are satisfactorily paid in full.

**C. Rates**

	<u>Rate Per Month</u> <sup>1,3</sup>	
1. Business, Per Line		(C)
a) STAR Business Bundle Standard	\$42.99	(I)
b) STAR Business Bundle Unlimited Standard	\$62.99	(I)
	<u>Non-Recurring Charge</u>	
2. Service Order Charge	\$10.00	

<sup>1</sup> One, Two, and Three-Year Contract rates are also available.

<sup>2</sup> This service is grandfathered to existing customers effective May 1, 2023. The service will not be available to new customers after this date.

<sup>3</sup> The rate increase is effective on the Company’s May bill cycle date.

(C)

(C) Indicates Change (I) Indicates Increase

**Issued:** April 1, 2024

**Effective:** May 1, 2024

**RATES AND RULES GOVERNING LOCAL EXCHANGE SERVICE**

**APPROVED**

**SAFETY LINE SERVICE\***

**A. GENERAL**

Safety Line Service is a bundle for residential customers who have their main telecommunications service with a wireless provider but require a basic access line for back-up and high speed data.

The bundle includes a Residential One-Party Line and 1.5 Mbps high speed data.

**B. TERMS AND CONDITIONS**

1. Safety Line Service will be provisioned where facilities are available.
2. Rules, regulations, and limitations as specified elsewhere in the Company’s tariffs will apply to this bundle.
3. No other optional services or features are allowed with this bundle, except Toll Restriction, Toll Restriction PIN Override, Non-Published Numbers, and Non-Listed Numbers. These four services will be allowed at the rate listed elsewhere in the tariff.
4. Customers must subscribe to this service for 1 year. Cancellation of the bundle prior to the one year timeframe will cause an early termination fee of \$99 to apply.
5. Customers must subscribe to TDS Long Distance Corporation as their long distance provider.
6. Any toll calls will be billed at TDS Long Distance toll rates.
7. Service Connection Charges will not apply.
8. Optional Call plans are not available with this bundle.
9. Seasonal Service is not available with this bundle.

**C. RATES AND CHARGES**

	<u>Monthly Rate</u>	
Bundle Base Rate – DSL Market A	\$63.20 <sup>1,2</sup>	(I)
Bundle Base Rate – DSL Market B	\$63.20 <sup>1,2</sup>	(I)

(See map on Sheet 11.1 showing Market A and Market B territories)

- <sup>1</sup> Other data speeds may be available for an additional charge.
- <sup>2</sup> These increases are effective on the Company’s January bill cycle date. (C)
- \* This service is grandfathered to existing customers effective August 1, 2012. This service will not be available to new customers after this date.

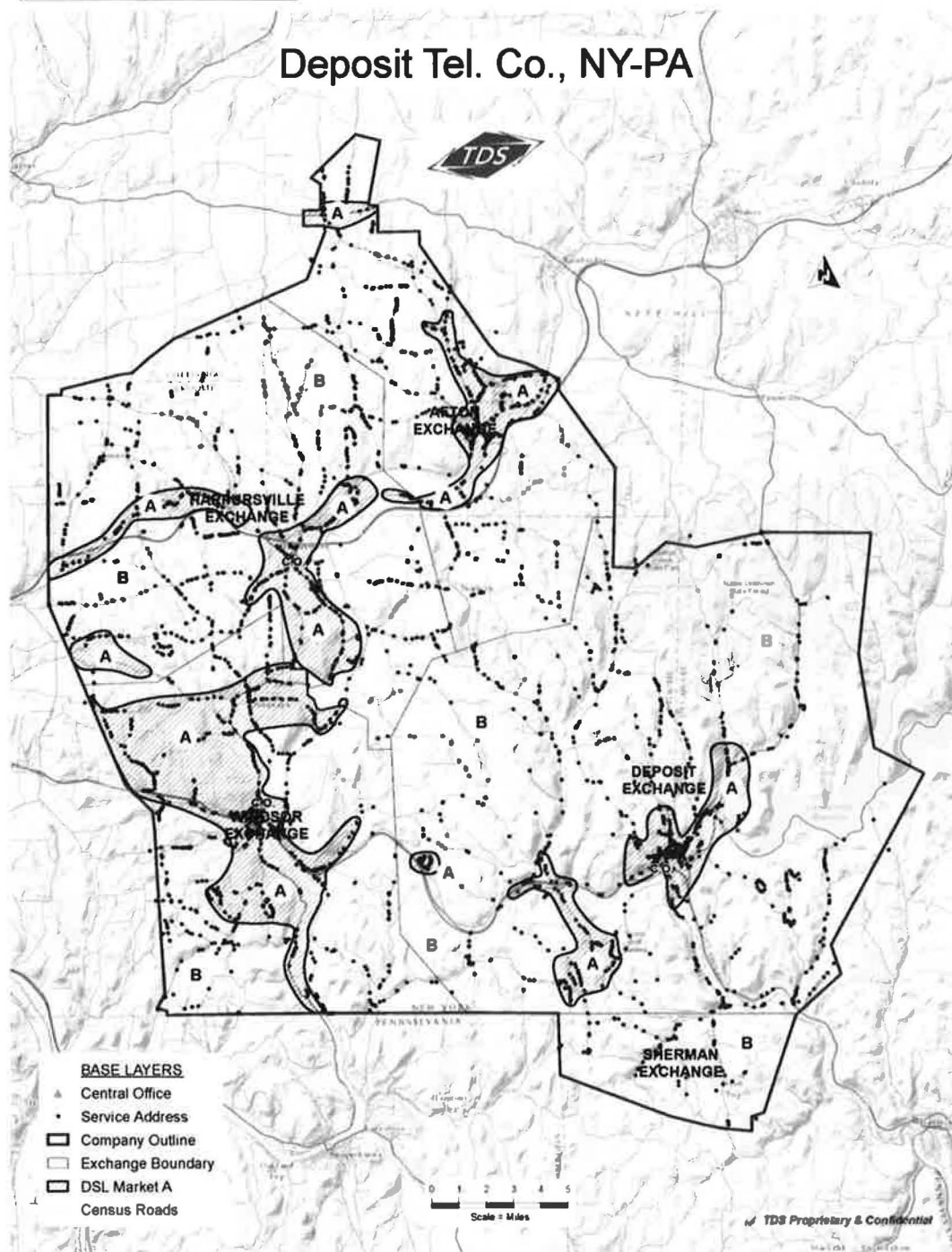
(I) Indicates Increase      (C) Indicates Change

**RATES AND RULES GOVERNING LOCAL EXCHANGE SERVICE**

**SAFETY LINE SERVICE\***

APPROVED

**C. RATES AND CHARGES**



**RATES AND RULES GOVERNING LOCAL EXCHANGE SERVICE**

APPROVED

**BUSINESS SAFETY LINE SERVICE**

A. General

Business Safety Line Service is a bundle for business customers who have their main telecommunications service with a wireless provider, but requires a basic access line for back-up and emergency service along with high speed data.

The bundle includes a Basic Access Line\*, and 1.5 Mbps high speed data\*\*.

B. Terms and Conditions

1. Safety Line Service will be provisioned where facilities are available.
2. Rules, regulations, and limitations as specified elsewhere in the Company's tariffs will apply to this bundle.
3. No other optional services or features are allowed with this bundle, except Toll Restriction, Toll Restriction PIN Override, Non-Published Numbers, and Non-Listed Numbers. These four services will be allowed at the rate listed elsewhere in the tariff.
4. Customers must subscribe to TDS Long Distance Corporation as their long distance provider.
5. Any toll calls will be billed at TDS Long Distance default toll rates.
6. Service Connection Charges will be waived if a customer signs a one year or greater contract.
7. Optional Call plans are not available with this bundle.
8. Seasonal Service/Suspension of Service is not available with this bundle.

C. Rates and Charges

Monthly Rate

Bundle Base Rate	
Business	\$59.00 <sup>1</sup>

<sup>1</sup> Other data speeds may be available for an additional charge.  
\* The regulation portion of this package can found in Section 2 of this tariff.  
\*\* Provided for informational purposes only (non-jurisdictional in this tariff).

(C) Indicates Change

**RATES AND RULES GOVERNING LOCAL EXCHANGE SERVICE**

**APPROVED**

**SECURITY LINE SERVICE**

**A. GENERAL**

**Security Line** Service is a bundle for residential customers who have their main telecommunications service with a wireless provider, but require a basic access line for back-up and emergency service along with their high speed data.

The bundle includes a Residential One-Party Line, and **up to 1 Mbps** high speed data.

**B. TERMS AND CONDITIONS**

1. **Security Line** Service will be provisioned where facilities are available.
2. Rules, regulations, and limitations as specified elsewhere in the Company’s tariffs will apply to this bundle.
3. No other optional services or features are allowed with this bundle, except Toll Restriction, Toll Restriction PIN Override, Non-Published Numbers, and Non-Listed Numbers. These four services will be allowed at the rate listed elsewhere in the tariff.
4. Customers must subscribe to this service for 1 year. Cancellation of the bundle prior to the one year timeframe will cause an early termination fee of \$99 to apply.
5. Customers must subscribe to TDS Long Distance Corporation as their long distance provider.
6. Any toll calls will be billed at TDS Long Distance toll rates.
7. Service Connection Charges will not apply.
8. Optional Call plans are not available with this bundle.
9. Seasonal Service is not available with this bundle.

**C. RATES AND CHARGES**

	<u>Monthly Rate</u>	
Bundle Base Rate – DSL Market A	\$55.20 <sup>1,2</sup>	(I)
Bundle Base Rate – DSL Market B	\$55.20 <sup>1,2</sup>	(I)

(See map on Sheet 13.1 showing Market A and Market B territories)

<sup>1</sup> Other data speeds may be available for an additional charge.  
<sup>2</sup> These increases are effective on the Company’s January bill cycle date. (C)

(I) Indicates Increase (C) Indicates Change

**Issued:** December 14, 2023 **Effective:** January 16, 2024



TDS Telecom/Deposit  
Telephone Company, Inc.

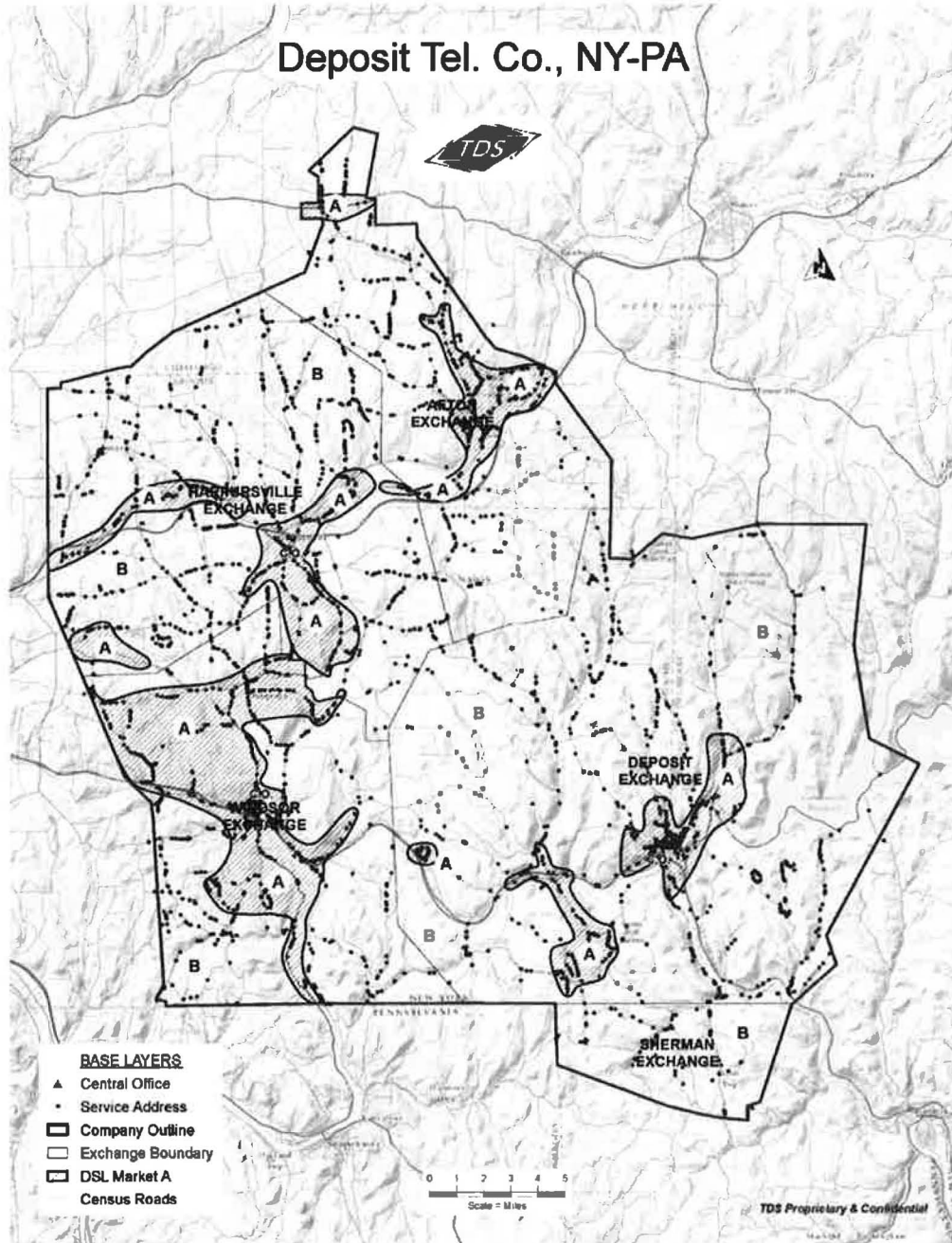
SECTION 2  
Original Sheet 13.1

**RATES AND RULES GOVERNING LOCAL EXCHANGE SERVICE**

**SECURITY LINE SERVICE**

**APPROVED**

**C. RATES AND CHARGES**



TDS Telecom/Deposit  
Telephone Company, Inc.

SECTION 2  
First Revised Sheet 14  
Cancels Original Sheet 14

**RATES AND RULES GOVERNING LOCAL EXCHANGE SERVICE**

**APPROVED**

**BASIC & UNLIMITED PHONE BUNDLES** <sup>(2)</sup>

(C)

**A. General**

The Basic and Unlimited Phone Bundles are optional service bundles. Each package permits a customer to receive services and features for a flat monthly rate, for each Basic or Unlimited Phone Bundle subscriber line provided. The Bundles include the following services:

1. Basic Phone Bundle<sup>(1)</sup>

Includes: Residential One-Party Line, Caller ID Deluxe, 3-Way Calling, Call Forwarding, and Basic Voice Mail

2. Unlimited Phone Bundle<sup>(1)</sup>

Includes: Residential One-Party Line, Caller ID Deluxe, 3-Way Calling, Call Forwarding, Call Return, Repeat Dialing, Speed Call 8, Anonymous Call Rejection, Selective Call Acceptance, Selective Call Forwarding, Selective Call Rejection, Call Forward-Busy (Variable), Call Forward-No Answer (Variable), Call Hold, Call Waiting/Cancel Call Waiting, and Basic Voice Mail

**B. Conditions and Limitations**

1. Basic and Unlimited Phone Bundles will be provisioned where facilities are available.
2. Rules, regulations, and limitations as specified elsewhere in the Company's tariffs for each individual service will apply as part of this Bundle.
3. Feature availability is dependent on Central Office Facilities.
4. Basic & Unlimited Phone Bundle customers may terminate their Bundle at any time upon notice to the company without incurring a charge.
5. Service charges as described in Section 3 will not apply.
6. Customers may change their bundle without incurring a charge.
7. Vacation Service is available with these bundles.

<sup>(1)</sup> Customers must also subscribe to the corresponding TDS Long Distance Basic or Unlimited Plans

<sup>(2)</sup> This service is grandfathered to existing customers effective May 1, 2024. The service will not be available to new customers after this date.

(C)

(C)

(C) Indicates Change

**Issued:** April 1, 2024

**Effective:** May 1, 2024

TDS Telecom/Deposit  
Telephone Company, Inc.

SECTION 2  
Third Revised Sheet 15  
Cancels Second Revised Sheet 15

**RATES AND RULES GOVERNING LOCAL EXCHANGE SERVICE**

**APPROVED**

**BASIC & UNLIMITED PHONE BUNDLES** <sup>(2)</sup> (Continued)

(C)

**B. Conditions and Limitations** (Continued)

8. Basic or Unlimited Phone Bundle customers are not eligible for discounts or promotional offerings outside of this Bundle, unless specifically provided for in a promotional offering.
9. The Basic or Unlimited Phone Bundle may not be combined with any other optional toll calling plan service, except for those specified in this offering.
10. Customers who fail to pay the entire Bundle rate per month will have all Basic or Unlimited optional features removed. The customer will then be converted to the tariffed basic local exchange service rate. Service charges will not apply for converting services back to tariff rates. Such customers will not be permitted to re-enroll in these bundles until such time as all associated unpaid balances are satisfactorily paid in full.

**C. Rates**

Rate Per Month <sup>(1)(3)</sup>

1.	Residence		
	a) Basic Phone Bundle, per line	\$22.99	(I)
	b) Unlimited Phone Bundle, per line	\$27.99	(I)

<sup>(1)</sup> Rate includes the Subscriber Line Charge.

<sup>(2)</sup> This service is grandfathered to existing customers effective May 1, 2024. The service will not be available to new customers after this date.

<sup>(3)</sup> The rate increase is effective on the Company's May bill cycle date.

(C)  
|

(C) Indicates Change      (I) Indicates Increase

**Issued:** April 1, 2024

**Effective:** May 1, 2024

**RATES AND RULES GOVERNING LOCAL EXCHANGE SERVICE**

**TDS BUSINESS VOICE BUNDLE**

**APPROVED**

**A. General**

1. The TDS Business Voice Bundle is an optional offering that packages services and features together for a flat monthly rate that is applicable to each TDS Business Voice subscriber line provided.

- a) TDS Business Voice Bundle<sup>(1)</sup>

Includes: Business One-Party Line and the following features: Caller ID Deluxe, Call Forwarding, Call Forward Remote Access, Call Waiting/Cancel Call Waiting, 3-Way Calling, Hunting, Selective Call Acceptance, Voice Mail, and Unlimited Minutes of TDS Long Distance<sup>(2)</sup> calling.

**B. Conditions and Limitations**

1. Rules, regulations, and limitations as specified elsewhere in the Company's tariffs for each individual service will apply.
2. The Bundle may not be combined with any other optional toll calling plan service, except for those specified in this offering.
3. Discounts or promotions outside of this Bundle are not available, unless specifically provided for in the discount or promotional offering.
4. Service Connection Charges, as described in Section 3 of this tariff, apply to requests for new and additional TDS Business Voice Bundle lines, and moves of existing lines.
5. The Service Order Charge listed under the "Rates" section below will apply if the customer requests a change to their TDS Business Voice Bundle offering (i.e. a request to change features or downgrade) or requests to change from the TDS Business Voice Bundle back to Local Exchange Service. The charge will not apply when the TDS Business Voice Bundle replaces existing Local Exchange Service or the customer would like to upgrade their TDS Business Voice Bundle.

<sup>1</sup> Customers must also subscribe to TDS Telecom's high speed data.

<sup>2</sup> Customers must also subscribe to the corresponding TDS Long Distance Business Voice Plan.

TDS Telecom/Deposit  
Telephone Company, Inc.

SECTION 2  
Original Sheet 17

**APPROVED**

**RATES AND RULES GOVERNING LOCAL EXCHANGE SERVICE**

**TDS BUSINESS VOICE BUNDLE** (Continued)

**B. Conditions and Limitations** (Continued)

7. TDS Business Voice Bundle customers may terminate their package at any time upon notice to the company.
8. Customers who fail to pay the entire package rate per month will have all TDS Business Voice Bundle optional features removed. The customer will then be converted to the tariffed Basic Local service rate. Service Charges will not apply for converting services back to a la carte tariff rates. Such customers will not be permitted to re-enroll in any of the packages until such time as all associated unpaid balances are satisfactorily paid in full.

**C. Rates**

		<u>Term Rate Per Month<sup>(1)</sup></u>		
		<u>MTM</u>	<u>1 Yr.</u>	<u>2/3 Yr.</u>
1.	Business, Per Line			
	a) TDS Business Voice Bundle	\$59.99	\$49.99	\$39.99
			<u>Non-Recurring Charge</u>	
	b) Service Order Charge		\$10.00	

<sup>(1)</sup> Rate Includes the Subscriber Line Charge

**APPROVED**

**RATES AND RULES GOVERNING LOCAL EXCHANGE SERVICE**

BASIC 24 & UNLIMITED 24 PHONE BUNDLES

A. General

The Basic 24 and Unlimited 24 Phone Bundles are optional service bundles. Each package permits a customer to receive services and features for a flat monthly rate, for each Basic 24 or Unlimited 24 Phone Bundle subscriber line provided. The Bundles include the following services:

1. Basic 24 Phone Bundle <sup>(1)</sup>  
Includes: Residential One-Party Line, Caller ID Deluxe, 3-Way Calling, Call Forwarding, Speed Call 8, and Basic Voice Mail
2. Unlimited 24 Phone Bundle <sup>(1)</sup>  
Includes: Residential One-Party Line, Caller ID Deluxe, 3-Way Calling, Call Forwarding, Repeat Dialing, Speed Call 8, Anonymous Call Rejection, Selective Call Acceptance, Selective Call Forwarding, Selective Call Rejection, Call Forward-Busy (Variable), Call Forward-No Answer (Variable), Call Hold, Call Waiting/Cancel Call Waiting, and Basic Voice Mail

B. Conditions and Limitations

1. Basic 24 and Unlimited 24 Phone Bundles will be provisioned where facilities are available.
2. Rules, regulations, and limitations as specified elsewhere in the Company's tariffs for each individual service will apply as part of this Bundle.
3. Feature availability is dependent on Central Office Facilities.
4. Basic 24 & Unlimited 24 Phone Bundle customers may terminate their Bundle at any time upon notice to the company without incurring a charge.
5. Service charges as described in Section 3 will not apply.
6. Customers may change their bundle without incurring a charge.
7. Vacation Service is available with these bundles.

<sup>(1)</sup> Customers must also subscribe to the corresponding TDS Long Distance Basic or Unlimited Plans.

**APPROVED**

**RATES AND RULES GOVERNING LOCAL EXCHANGE SERVICE**

BASIC 24 & UNLIMITED 24 PHONE BUNDLES (Continued)

B. Conditions and Limitations (Continued)

8. Basic 24 or Unlimited 24 Phone Bundle customers are not eligible for discounts or promotional offerings outside of this Bundle, unless specifically provided for in a promotional offering.
9. The Basic 24 or Unlimited 24 Phone Bundle may not be combined with any other optional toll calling plan service, except for those specified in this offering.
10. Customers who fail to pay the entire Bundle rate per month will have all Basic or Unlimited optional features removed. The customer will then be converted to the tariffed basic local exchange service rate. Service charges will not apply for converting services back to tariff rates. Such customers will not be permitted to re-enroll in these bundles until such time as all associated unpaid balances are satisfactorily paid in full.

C. Rates

1. Residence	<u>Rate Per Month</u> <sup>(1)</sup>
a) Basic 24 Phone Bundle, per line	\$19.99
b) Unlimited 24 Phone Bundle, per line	\$24.99

<sup>(1)</sup> Rate includes the Subscriber Line Charge.